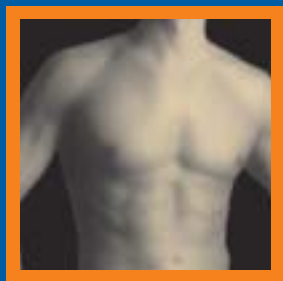
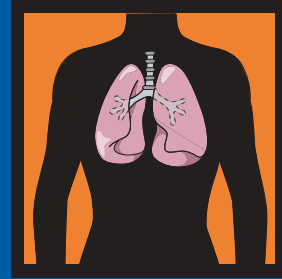
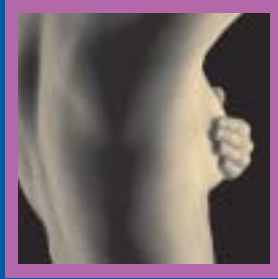
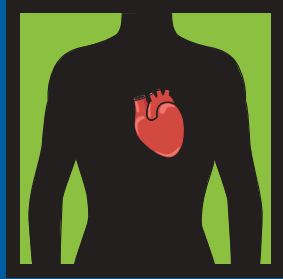
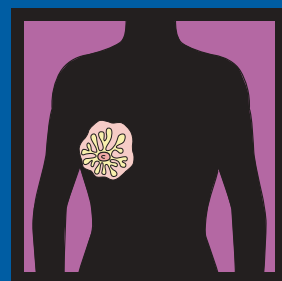
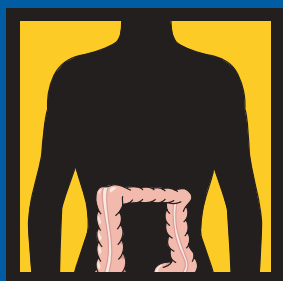
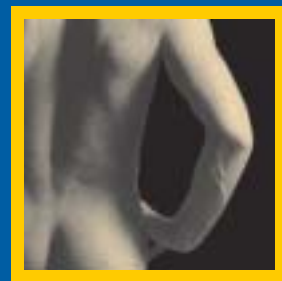


2002 Annual Report



MULTIPLE
PRODUCTS
SINGLE
VISION



International
Medical
Innovations Inc.

Company Profile:

IMI is a leading predictive medicine company developing rapid, non-invasive tests for the early detection and monitoring of life-threatening diseases, particularly cardiovascular disease and cancer.

IMI's products are developed to meet recognized medical needs in high-potential markets, using a low-risk development strategy. Predictive medicine is becoming a vital part of comprehensive health care. It identifies patients at risk of serious diseases, allowing for prevention, earlier treatment and significant savings to the health system.

By developing innovative tests that identify serious diseases early and are rapid and non-invasive, IMI is driving predictive medicine.

Table of Contents

Milestones and Achievements	1
President's Letter to Shareholders	2
The Need for Predictive Medicine	4
Medical Perspectives	6
IMI Products	8
Commericalizing Innovative Products	10
Management's Discussion and Analysis	12
Auditors' Report	17
Financial Statements	18
Notes to Financial Statements	21

Annual Meeting

Wednesday, June 18, 2003, 10:30 a.m.
Toronto Stock Exchange Conference Centre
130 King Street West, Toronto, Ontario

Notes to readers:

All references to "dollars" or "\$" are in Canadian dollars, except where otherwise indicated.

The 11-month fiscal period ended December 31, 2001 resulted from the Company's change to a December 31 year-end. This fiscal period is referred to as the Company's "December 2001" period, compared with its previous fiscal year ended January 2001, now called the "January 2001" fiscal year.

Forward-looking Statements:

This report contains forward-looking statements that reflect the company's current expectation regarding future events. The forward-looking statements involve risk and uncertainties. Actual events could differ materially from those projected herein and depend on a number of factors including, but not limited to, changing market conditions, successful and timely completion of clinical studies, uncertainties related to the regulatory approval process, establishment of corporate alliances and other risks detailed from time to time in the company's quarterly, annual and other public filings.



International
Medical
Innovations Inc.

4211 Yonge Street, Suite 300
Toronto, Ontario, Canada M2P 2A9
Tel: (416) 222-3449 Fax: (416) 222-4533 www.imimedical.com